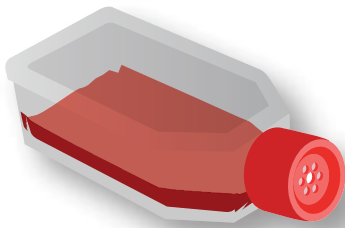


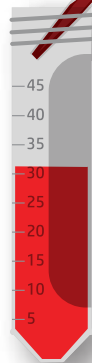
Happy Cell[®]
ASM

Culturing Spheroids and Microtissues

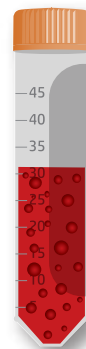
as simple as 1 to 3D with Happy Cell[®]
ASM



Grow Cells



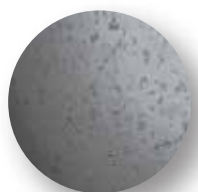
Add cells to
Happy Cell[®]
ASM



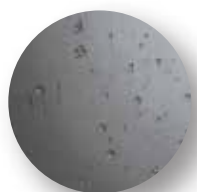
Incubate &
Analyse

Features

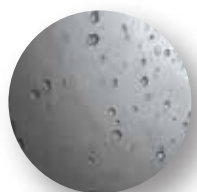
- Allows easy labelling, washing and dosing of cells
- Designed to be used with Automated Microscopes and Plate Readers.
- A viable alternative to Matrix Gels



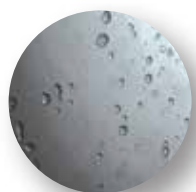
Day 0



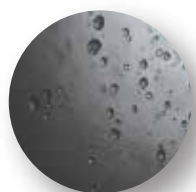
Day 1



Day 2



Day 3



Day 4

Time course of spheroid formation with prostate cells
incubated in Happy Cell[®] ASM

Vale
Life Sciences